

Marylebone Townhouse, 2016

Architect: Gabriel Chipperfield
www.gcoffice.co.uk/

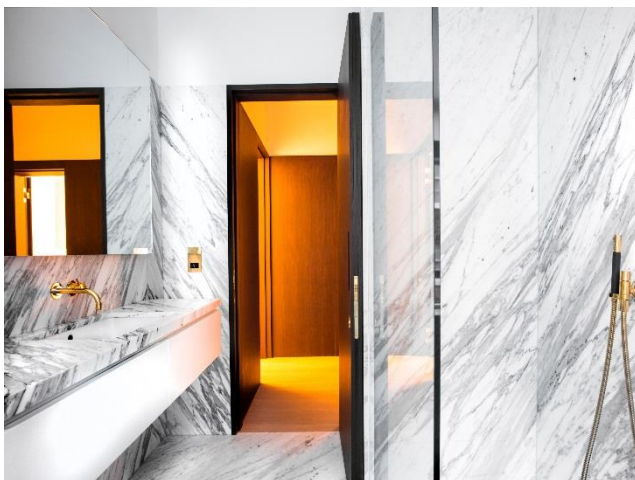
As part of our ongoing relationship with GC Office Jupiter were asked to install between existing floor joists in preparation for a timber and marble floor finish.



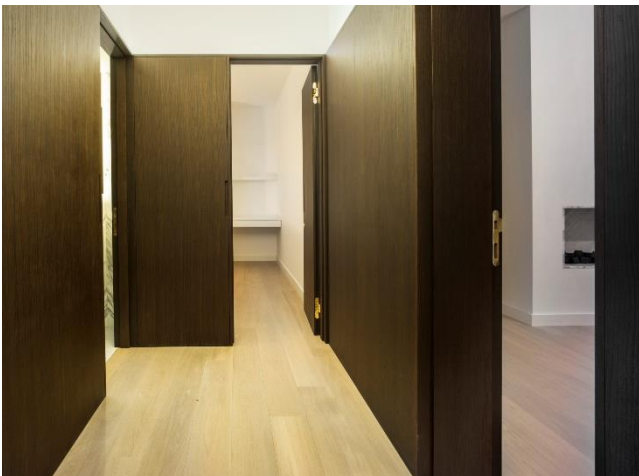
The Jupiter IDEAL EPS Between Joist system was employed with the Screed Replacement Tile (SRT) being used in the bathrooms and Fermacell in timber areas.



Using the SRT in bathrooms allowed GC office to specify very large format marble as a floor finish with the Jupiter SRT Guarantee.



The Jupiter SRT Guarantee means if you have a floor finish failure on top of our SRT we will replace the floor finish. In 12 years of trading we have never experienced a floor failure.



This Townhouse has had a fantastic makeover. The high quality of material and installation is clear to see in these photos of the finished project.



For more information get in touch via email or telephone.

Email: Info@Jupiterunderfloorheating.com

Tel: 01276 859 066

JUPITER



© 2016

T: 01276 859 066

JUPITER Heating Systems Limited

www.jupiterunderfloorheating.com